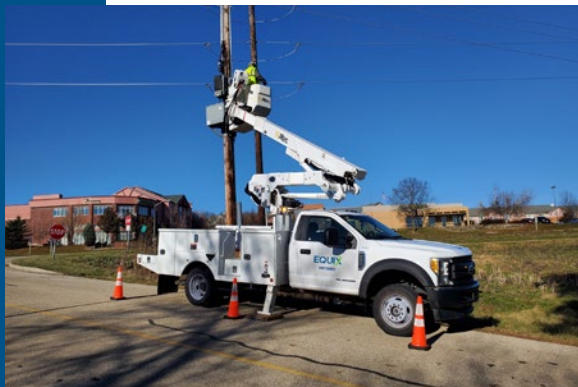




## Services & Capabilities



**Building Confidence Since 1985**



Equix Inc. is a privately held firm that develops employees and its portfolio of services in the technical, professional, and construction services industries across North America.

Focusing on utility, infrastructure, parks and recreation, and renewable energy projects, Equix offers full-service surveying, design, construction, and maintenance services to the broadband, electric, gas, heavy civil, government, pipeline, renewable energy, water, and wastewater markets.

## Our Services

### Gas Distribution

Providing services to bring natural gas to consumers

- Open and joint trench
- Plowing/trenching
- Directional drilling
- Town border station construction
- Welding
- Pipe fusion
- Hot tap and stopple operations
- Re-build work main and services
- Steel and plastic
- Crossbore inspections

### Geotechnical Services

Delivering professional geotechnical support

- Design-build groundwater control
- Geotechnical evaluations
- Pump and treatment systems - contaminated groundwater
- Horizontal wells and trenches
- Groundwater containment barriers
- Hydro-demolition services
- Flow diversion and siphoning

### Heavy Civil

All aspects of heavy civil construction

- Project management
- GPS control & layout
- Best practice ECMS
- Clearing and grubbing
- Grading
- Wet utility installation
- Foundation excavation
- Site finishing
- Aggregate placement
- Soil stabilization and restoration

## **Horizontal Directional Drilling**

Using drilling rigs to build pipelines, electrical systems, and telecommunications in a trenchless construction operation

- Drills up to 5,500 feet in length
- Up to 36-inch pipe
- Rock and soil conditions
- Pullbacks up to 140,000 pounds
- Steel, HDPE, Certa-lok, Bore-Guard, PVC, continuous conduit

## **Pipeline Construction**

Providing transmission and distribution mainline and maintenance programs

- Mainline construction
- Station construction (metering, regulator, pump)
- Fabrication (greenfield & brownfield)
- Launchers & receivers
- Maintenance and repair services
- Relocations and lowering
- Class change/DOT replacements
- Gathering systems
- Tap & stopple
- Anomaly digs & coating repairs
- Make piggable operations
- Valve change outs
- Hydrotesting
- Pipe stringing

## **Pole Inspection Services**

Ending the need to worry about the stability and soundness of your utility poles

- Pole inspection
- Pole reinforcement
- Pole permitting attachment requests
- Pole stubbing
- Quality control testing
- Digital mapping and data access

## **Renewable Energy**

Delivering EPC services for wind and solar energy projects

- Site survey
- Clearing and grubbing
- Access road construction
- Foundation installation
- Dewatering services
- Ground Penetrating Radar (GPR)
- Electrical collection system trenching and terminations
- Module installation
- Substation & transmission construction
- Solar racking installation (fixed or single-axis)
- Steel erection of carport canopies
- Interconnection
- Landfill ballast foundations

## **Right of Way & Real Estate**

Engaging right-of-way team to handle all aspects of property research, acquisition, and ingress/egress details

- Property research
- CSMs and plats
- 60-year line of title searches
- Existing easement research
- Easement document preparation
- Property owner negotiation
- Survey coordination
- Route negotiation
- Construction coordination for ingress/egress into existing easements
- Permitting assistance
- Calculate and negotiate damages payments
- Liaison between property owner and contractor

## **Survey**

Using expertise to assure your project gets off on the right foot with preliminary survey before design to performing quality control checks and staking the final product

- Staking of transmission lines including easement corridor
- Foundation staking
- Offsets and bisects for transmission poles
- Underground facility staking
- Staking for gas compressor/substations
- Wind farm layout including
- Highway construction staking
- Mark wetland via wetland delineation & staking
- Flood plain surveys
- Topographical surveys
- Settlement surveys

## **Telecommunications Design & Construction Services**

Leading the way with experts in system stability

- Fiber/copper design and construction
- Conduit/manhole systems
- Directional boring, trenching and plowing
- Splicing and testing
- Fiber characterization testing
- 5G, Small Cell and DAS
- Legal mandate
- Wireless PIM and sweep testing
- Field staking
- Planning
- Permitting preparation, submittal, and tracking
- Field surveys
- GIS/CAD services
- Inspection/as-builts

## **Trenching Services**

Supporting pipeline, renewables and electrical markets with specialty trenching services

- Large trenchers up to 325,000 pounds/900 HP
- Additional trenchers up to 125,000 pounds/400 HP
- Single-pass capability of 66-inches wide
- Pipeline trenching
- Single-pass capability of 40-inches deep
- Electrical underground trenching
- Wind farm collection system trenching

## **Underground Electric Installation**

Completing transmission and distribution underground electric construction

- Directional boring, trenching and plowing
- Joint trench work with natural gas and telecommunications
- Supply and installation of utility manholes
- Placement and setting of transformer pads
- Grounding pedestals
- Junction box placement
- Installation of transformers (new and upgrades)
- Installation of electrical conduit
- Cable pulling

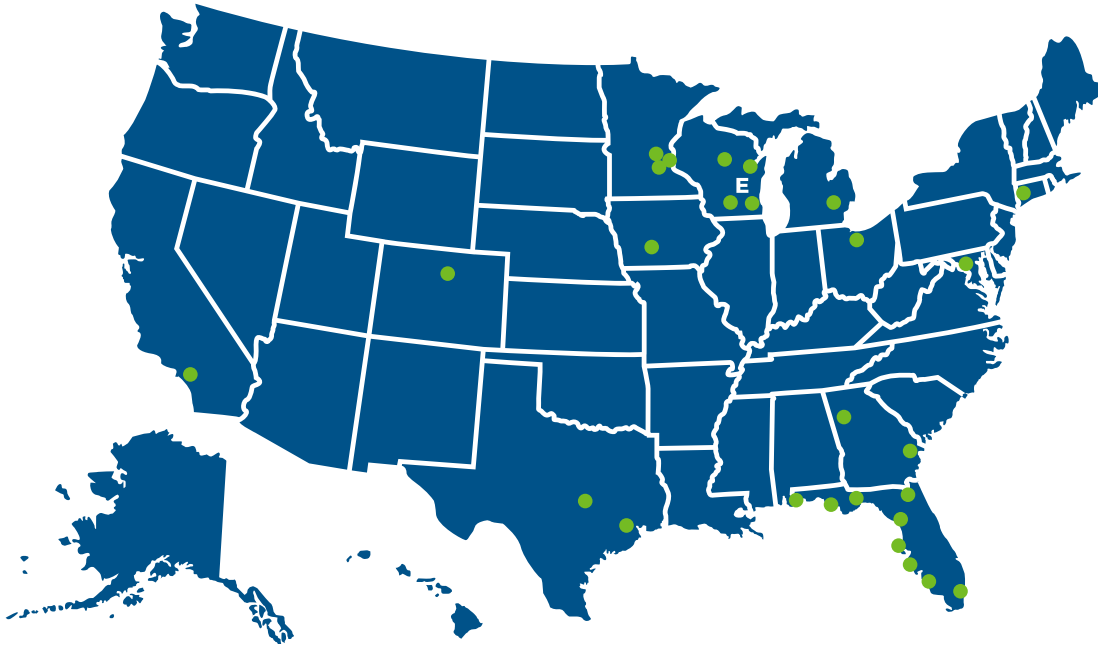
## **Water/Wastewater**

Our teams provide services in remote and residential areas

- Cross bore inspection
- Sewer mainline and lateral cleaning and televising
- Mainline and lateral joint grouting
- Cured-in-place pipe (CIPP) rehabilitation
- Manhole rehabilitation
- Closed-circuit television inspection
- GIS overlays and data management
- NASSCO training

**STRENGTHENING CONNECTIONS.  
BUILDING COMMUNITY.**

## OUR OFFICE LOCATIONS



## OUR CORE VALUES



We foster a safety culture



We build cohesive teams



We act with integrity and professionalism



We support our customers and stakeholders



We are stewards of our environment

## MARKETS SERVED

Oil and Gas

Electric Power

Renewable Energy

Communications

Heavy Civil

Water & Wastewater

Transportation

Government



# EQUIX

46 South Rolling Meadows Drive  
Fond du Lac, WI 54937

920.924.3690

EquixInc.com

